

New American Cottage Garden

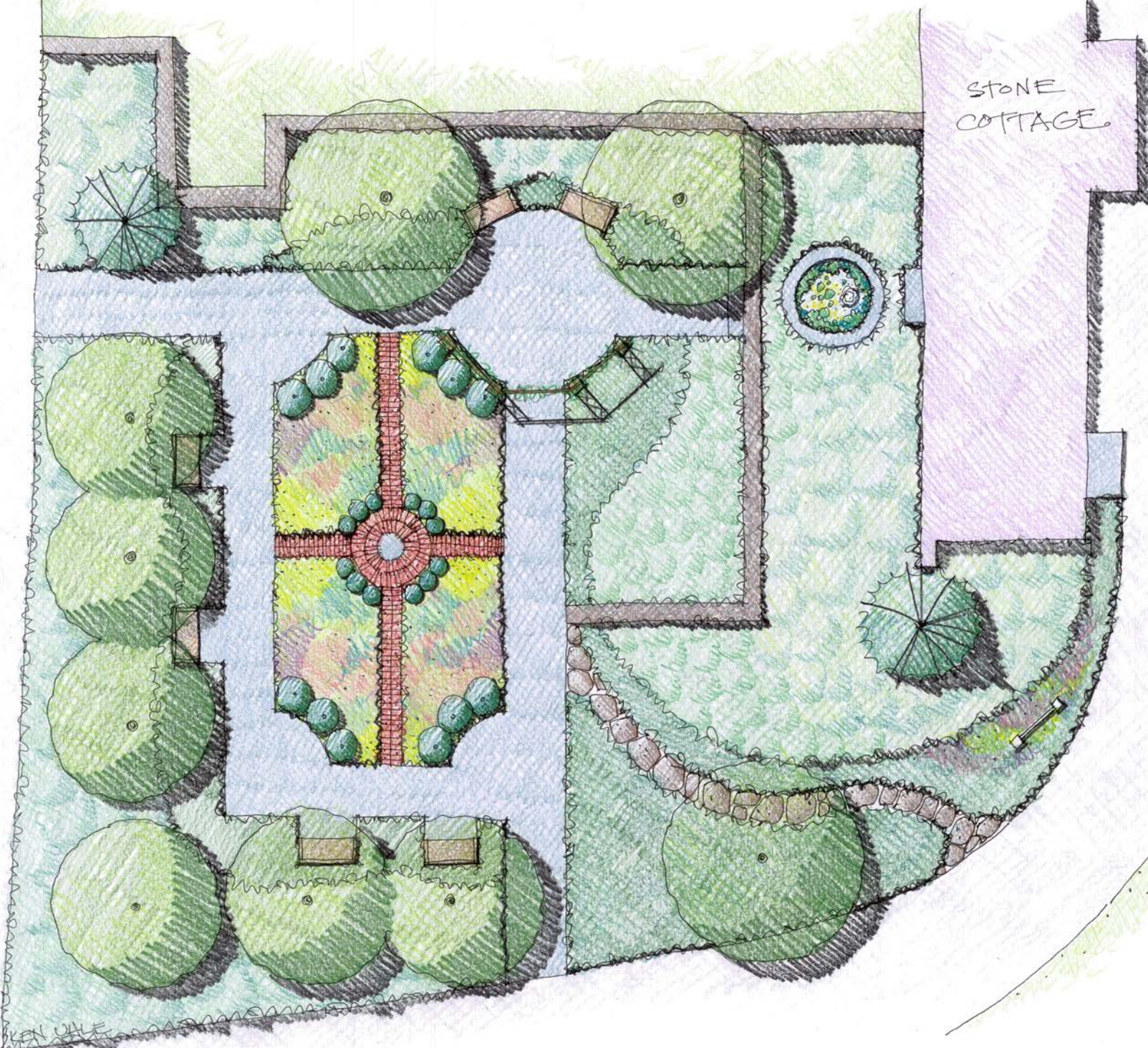
Plants and Bloom Times

Botanical name	Common name	Bloom time
<i>Amsonia tabernaemontana</i>	Eastern bluestar	May–June
<i>Arctostaphylos uva-ursi</i>	Bearberry	April–May
<i>Arunco dioicus</i>	Goat's beard	June–July
<i>Asclepias tuberosa</i>	Butterflyweed	July–August
<i>Betula nigra</i>	River birch	March–April
<i>Caltha palustris</i>	Marsh marigold	April–May
<i>Calycanthus floridus</i>	Sweetshrub	May–June
<i>Carex pensylvanica</i>	Pennsylvania sedge	April–June
<i>Ceanothus americanus</i>	New Jersey tea	July–August
<i>Chrysogonum virginianum</i>	Green and gold	May–August
<i>Clethra alnifolia</i>	Summersweet	August–September
<i>Clethra alnifolia</i> 'Rosea'	Summersweet	August–September
<i>Clethra alnifolia</i> 'Sixteen Candles'	Summersweet	August–September
<i>Coreopsis verticillata</i>	Threadleaf tickseed	June–July
<i>Cornus florida</i>	Flowering dogwood	May–June
<i>Dennstaedtia punctilobula</i>	Hay-scented fern	n/a
<i>Echinacea purpurea</i> 'Magnus'	Purple coneflower	July–September
<i>Eragrostis spectabilis</i>	Purple lovegrass	August–September
<i>Geranium maculatum</i>	Wild geranium	May–June
<i>Hamamelis virginiana</i> 'Little Suzie'	American witch hazel	October–November
<i>Hydrangea arborescens</i>	Smooth hydrangea	June–September
<i>Hydrangea arborescens</i> 'Invincible Spirit'	Smooth hydrangea	June–September
<i>Hypericum frondosum</i> 'Sunburst'	Golden St. John's wort	June–September
<i>Ilex glabra</i> 'Shamrock'	Inkberry	May–June
<i>Ilex opaca</i> 'Maryland Dwarf'	American holly	May–June
<i>Ilex opaca</i> 'Satyr Hill'	American holly	May–June
<i>Ilex verticillata</i> 'Red Sprite'	Winterberry	June–July
<i>Ilex verticillata</i> 'Jim Dandy'	Winterberry	June–July
<i>Iris versicolor</i>	Northern blueflag iris	May–June
<i>Itea virginica</i> 'Henry's Garnet'	Virginia sweetspire	June–July
<i>Juncus effusus</i>	Soft rush	June–August

Botanical name	Common name	Bloom time
<i>Liatris spicata</i>	Blazing star	July–August
<i>Lonicera sempervirens</i>	Trumpet honeysuckle	May–August
<i>Lonicera sempervirens</i> 'Magnifica'	Trumpet honeysuckle	May–August
<i>Magnolia acuminata</i>	Cucumber magnolia	May–June
<i>Monarda didyma</i> 'Jacob Cline'	Beebalm	June–August
<i>Morella pensylvanica</i>	Northern bayberry	April–May
<i>Morella pensylvanica</i> 'Silver Sprite'	Northern bayberry	April–May
<i>Nymphaea odorata</i>	Fragrant water lily	July–October
<i>Pachysandra procumbens</i>	Allegheny spurge	April–May
<i>Packeria aurea</i>	Golden groundsel	May–June
<i>Panicum virgatum</i> 'Ruby Ribbons'	Switchgrass	August–September
<i>Phlox paniculata</i> 'Nicky'	Garden phlox	July–August
<i>Phlox subulata</i> 'Emerald Blue'	Moss phlox	April–May
<i>Physocarpus opulifolius</i> 'Summer Wine'	Common ninebark	May–June
<i>Picea glauca</i> 'Echiniformis'	White spruce	n/a
<i>Picea glauca</i> 'North Star'	White spruce	n/a
<i>Polystichum acrostichoides</i>	Christmas fern	n/a
<i>Pontederia cordata</i>	Pickerelweed	June–September
<i>Pycnanthemum muticum</i>	Broad-leaved mountain mint	July–September
<i>Quercus phellos</i>	Willow oak	April–May
<i>Rhus aromatica</i> 'Gro-Low'	Fragrant sumac	April–May
<i>Rhus typhina</i> 'Tiger Eyes'	Staghorn sumac	June–July
<i>Rudbeckia fulgida</i>	Black-eyed Susan	July–September
<i>Sagittaria latifolia</i>	Arrowhead	July–September
<i>Saururus cernuus</i>	Lizard's tail	June–September
<i>Silene caroliniana</i> 'Short and Sweet'	Wild pink	May–August
<i>Symphotrichum oblongifolium</i> 'October Skies'	Aromatic aster	August–September
<i>Tiarella cordifolia</i>	Foamflower	May–June
<i>Vaccinium angustifolium</i>	Lowbush blueberry	May
<i>Vaccinium corymbosum</i> 'Bluecrop'	Highbush blueberry	May
<i>Vaccinium corymbosum</i> 'Patriot'	Highbush blueberry	May
<i>Viburnum prunifolium</i>	Blackhaw viburnum	May–June
<i>Zizia aurea</i>	Golden alexander	May–June



New American Cottage Garden



The New American Cottage Garden teaches by example, using native plants in familiar elements of a home garden such as a perennial bed, shrub border, and water feature that can be replicated in one's own landscape.

The central bed showcases natives in a formal display that appeals to gardeners with a more traditional sensibility. Benches are crafted from black locust, and an arbor features native vines. The lawn was replaced with ferns, ornamental grasses, and ground-covers to further illustrate sustainable principles.

The garden was designed for The Native Plant Center by landscape architect Ken Uhle. The more than 800 plants representing 60 species and cultivars attract wildlife—and people, who find peace and a sense of place within the natural-design setting.