

2007-2008

# Pocket Profile

Institutional  
Research  
& Planning



Westchester  
Community College

State University of New York

## ■ **Leadership**

### **STATE UNIVERSITY OF NEW YORK**

David Paterson, Governor

John B. Clark, Interim Chancellor

### **WESTCHESTER COUNTY**

Andrew J. Spano, County Executive

#### **Board of Legislators**

William J. Ryan, Chair

Thomas J. Abinanti

Jose I. Alvarado

Lois T. Bronz

Gordon A. Burrows

William E. Burton

Kenneth W. Jenkins

Michael B. Kaplowitz

James Maisano

Judith A. Myers

George Oros

Vito J. Pinto

Martin L. Rogowsky

Bernice Spreckman

Lyndon Williams

Peter Harckham

John Nonna

### **New York State Government Representatives**

#### **Senate**

Jeffrey D. Klein

Vincent L. Leibell III

Suzi Oppenheimer

Andrea Stewart-Cousins

Ruth Hassell-Thompson

#### **Assembly**

Greg Ball

Richard L. Brodsky

Adam T. Bradley

Sandra R. Galef

George S. Latimer

Amy Paulin

James Gary Pretlow

Michael J. Spano

# Table of Contents

■ OVERVIEW .....	3
■ MISSION .....	3
■ ACCREDITATION.....	4
■ GOVERNANCE AND ORGANIZATION .....	4
Cabinet .....	5
The Faculty Senate .....	5
Faculty Union .....	5
Staff Union .....	5
■ FACILITIES .....	6
■ FACULTY .....	7
■ FINANCES .....	7
■ STUDENT COMPOSITION .....	10
■ GRADUATES .....	11
■ PROGRAMS OF STUDY .....	12
The Associate Degrees .....	12
Certificates .....	14
■ CONTINUING EDUCATION.....	14
Professional Development Center .....	15
Extension Centers.....	15
Community Services .....	15
Mainstream, The Institute for Older Adults .....	16
Project Transition .....	16
The English Language Institute .....	16
Westchester Art Workshop .....	17
■ EDUCATIONAL OPPORTUNITY CENTER.....	18
■ DISTANCE LEARNING .....	19
■ SPECIALIZED SERVICES .....	19
The Office of the Disabled .....	19
The Women’s Forum .....	20
First Generation Students Program....	20

# Westchester Community College

## ■ Overview

Westchester Community College is one of 30 community colleges affiliated with the State University of New York (SUNY). It is counted among the largest colleges in the system, ranking sixth in total credit student enrollments.

Located on a 218-acre campus in the center of Westchester County, the college enrolled 12,073 credit students in fall 2007 and an additional 15,532 non-credit students. The most recent graduating class (May 2007) boasted 1,150 students in 59 programs.

Tuition in fall 2007 is still very affordable: \$1,725 per semester full-time with an additional student fee of \$181.25. Students attending part-time pay \$144.00 per credit hour.

Tuition costs for non-residents of New York State are \$4,313 per semester, full-time, and \$360 per credit, part-time.

## ■ Mission

The mission of Westchester Community College is to provide high quality, affordable education to meet the career, transfer, remedial, avocational and recreational needs of the Westchester community.

The college is:

- accessible
- adaptable to community needs
- dedicated to lifelong learning
- sensitive to the needs of our diverse population

## ■ **Accreditation**

Westchester Community College is fully accredited by the Middle States Association of Colleges and Secondary Schools, which accredits institutions in the states of New York, New Jersey, Pennsylvania, Delaware, Maryland, the District of Columbia, the Commonwealth of Puerto Rico, the Canal Zone, and the Virgin Islands.

The University of the State of New York (the Board of Regents) authorizes the college to award two-year Associate Degrees in Arts, Science, and Applied Science, as well as a number of one-year certificates in various program areas.

## ■ **Governance and Organization**

A ten-person Board of Trustees governs the college. Five are appointed by the County Board of Legislators, four by the Governor of the State; all serve nine-year terms. The student body elects a student member for a one-year term. Officers are elected by the Board of Trustees annually. A list of appointed members appears on the inside jacket of this booklet.

The President of the college is appointed by the Board of Trustees and is responsible for the implementation of its directives and for keeping the Board informed on all college matters. Since the college is under County sponsorship, the President is in close communication with the County Executive and the County Board of Legislators.

**Cabinet:** The President is advised by his Cabinet, which includes the Vice President/Dean of Academic Affairs, the Vice President/Dean of Student Personnel Services, the Vice President/Dean of Administrative Services, the Vice President of External Affairs/Executive Director of the Foundation for Westchester Community College, the Vice President/Dean of Community Services & Continuing Education, and the Vice President of Information Technology. Also included are the Associate Dean/Director of the Educational Opportunity Center and the Assistant Dean of Evening Services.

**The Faculty Senate:** A self-governing body, the Faculty Senate is composed of faculty, administrators, and two students. The Senate is charged with the responsibility in the Union contract of expressing the faculty's position to the President in the form of recommendations on professional appointments, reappointments, tenure, sabbaticals, and such other professional matters as educational policy, curriculum, student activities, and scholastic standards.

**Faculty Union:** In 1973, a separate local unit of the AFL-CIO (WCCFT) became the faculty's bargaining agent. On the basis of certification issued by the Westchester County Employment Relations Board, the County and the college recognize the WCCFT as the exclusive representative of all full-time and regular part-time professional employees, including adjunct instructors employed by the college.

**Staff Union:** The staff members of Westchester Community College are members of the Civil Service Employees Association (CSEA), Local 860, and Unit 9200. Unit 9200 represents 4,000 unionized Westchester County government employees working in all County Departments and at the college.

## ■ Facilities

In addition to 21 buildings on a beautiful 218-acre campus, student facilities include a 400-seat theater, a collegiate-size pool, tennis courts, athletic fields, art and dance studios, 18 science laboratories, approximately 2,260 PC stations, special laboratories in computer-assisted drafting/design and robotics, an Accounting/Office Technologies Lab, a simulated business environment Management Training lab and a commercially-equipped kitchen/laboratory.

The college boasts a modern, state-of-the-art 10,000 square foot library. The panoramic views of evergreens seen from all points in the large, ground-floor study area provide a very attractive work space for students. In addition, there is a 60-seat multi-media classroom/theater, a student lounge, space for the Honors Program, the Center for Faculty, and the Distance Learning Program. The ground floor houses the Academic Support Center, the Testing & Assessment Center, Learning Disabilities Services, the Writing Center, a large open computer lab for student use, and two computer-based classrooms.

The Virginia Marx Children's Center provides on-campus day care for the children of students, administrators, staff, faculty and the Westchester community.

The Career and Transfer Center provides job placement counseling services for students and alumni, as well as services to facilitate the transfer of the college students to four-year colleges.

## ■Faculty

Westchester Community College is particularly noted for the high quality of teaching provided by its faculty.

Since the inception of the Chancellor's Excellence Awards in 1973, 157 Westchester Community College faculty and professional staff have received these highly prized awards for excellence in teaching, professional services, librarianship, faculty services, scholarship and creative activities.

In the annual *Study of the Graduates*, a survey of Westchester Community College graduates conducted each year since 1979, a very substantial percentage of the alumni have consistently expressed *great satisfaction* or *satisfaction* with the *Overall Quality of Instruction* (97.1% in 2006 and their *Overall Experience at the college* (98.1% in 2006).

As of fall 2007, 98.2% of the 165 full-time teaching faculty have doctorate or master's degrees.

## ■Finances

**Revenues:** The college 2007-2008 total operating budget (including restricted funds such as federal and state grants) was \$119,124,639.

Revenues are derived from three major sources: the State government, the local sponsor (Westchester county government), and tuition paid by students. After several years of decline, state reimbursements went up slightly from 29.7% to 30.6% of the *unrestricted* operating budget, as shown in Table I. At the same time, the County government has maintained its

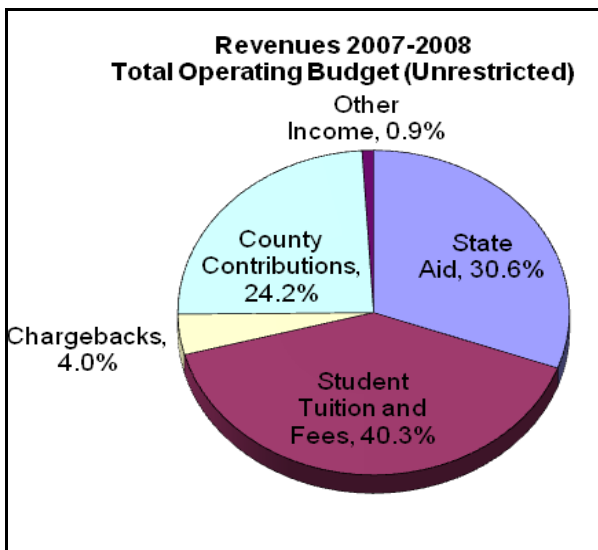
contribution at approximately the same dollar amount, contributing approximately one-fourth of the budget (24.2%).

In-state tuition for the 2007-2008 academic year is \$1,725 for full-time enrollment with an additional activity fee of \$181.25 per semester.

**Table I: Revenues by Source, 2007-2008**

<b>Revenues</b>	<b><i>N</i></b>	<b>%</b>
State Aid	\$29,489,819	30.6%
Student Tuition and Fees	38,859,434	40.3%
Chargebacks	3,890,000	4.0%
County Contributions	23,365,000	24.2%
Other Income	913,000	0.9%
<b>Total Operating Budget (unrestricted)</b>	<b>96,517,253</b>	<b>81.0%</b>
<b>Federal &amp; State Grants (Restricted)</b>	<b>22,607,386</b>	<b>19.0%</b>
<b>Total Budget</b>	<b>\$119,124,639</b>	<b>100%</b>

**Revenues 2007-2008: Total Operating Budget (unrestricted)**

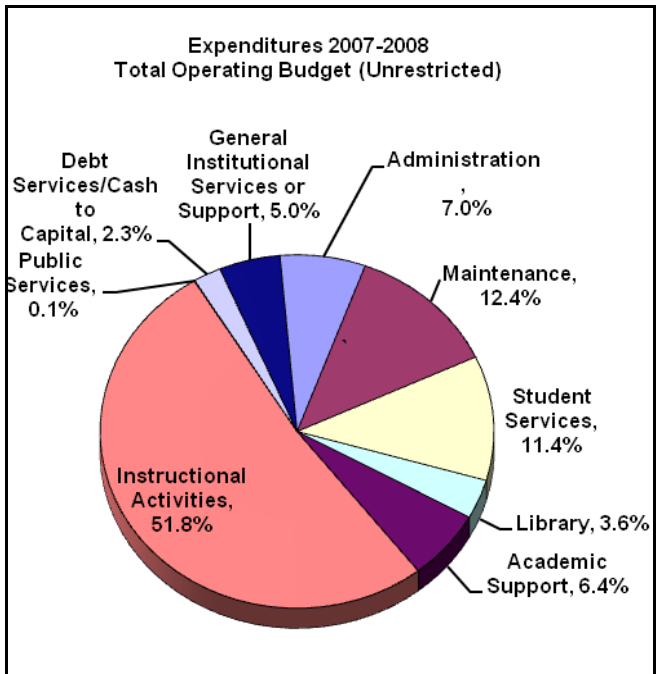


**Expenditures:** In 2007-2008, the majority of revenues (51.8%) from the unrestricted operating budget were spent on Instructional Activities.

**Table II: Expenditures by Category, 2007 – 2008**

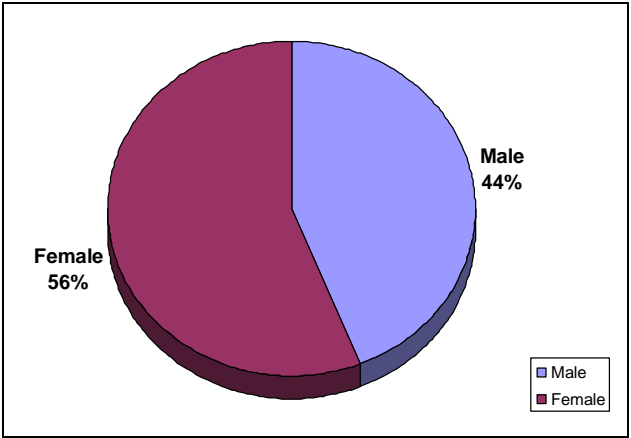
Expenditures	N	%
Administration	\$6,776,097	7.0%
Institutional Services	4,848,454	5.0%
Maintenance	12,010,115	12.4%
Student Services	10,996,232	11.4%
Library	3,473,940	3.6%
Academic Support	6,164,545	6.4%
Instructional Activities	49,983,376	51.8%
Public Service	56,305	0.1%
Debt Services/Cash to Capital	2,208,189	2.3%
<b>Total Operating Budget (unrestricted)</b>	<b>96,517,253</b>	<b>81.0%</b>
<b>(Federal &amp; State Grants Restricted)</b>	<b>22,607,386</b>	<b>19.0%</b>
<b>Total Budget</b>	<b>\$119,124,639</b>	<b>100%</b>

**Expenditures 2007 – 2008: Total Operating Budget (unrestricted)**

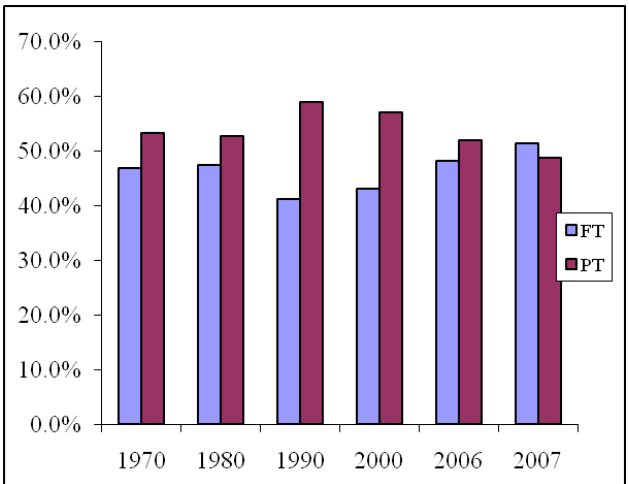


## ■ Student Composition

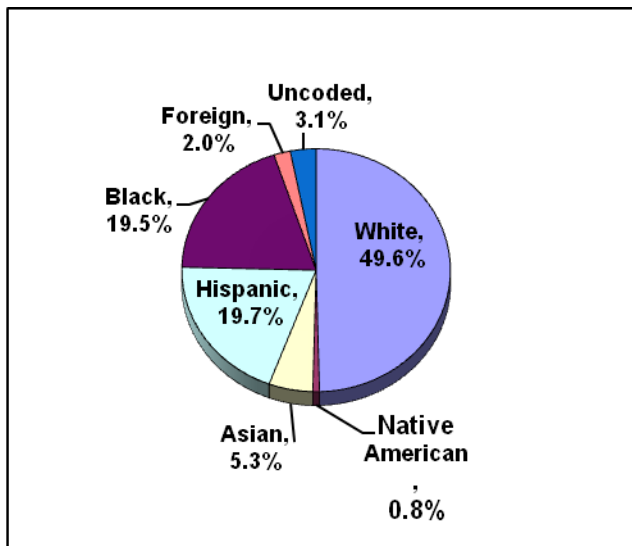
The fall 2007 credit student headcount was 12,073. Of these students 51.4% attended full-time and 48.6% attended part-time; 55.6% were female and 44.4% were male.



## Credit Headcount: Fall 1970 – 2007



45% of the students are from minority backgrounds (19% Black, 20% Hispanic, 5% Asian/Pacific, and 1% Native American), meeting or exceeding the percentages in the population at-large in Westchester County.



Fall 2007

## ■ Graduates

A survey is conducted each year to determine the activities of our graduates. The respondents of the 2006 survey of 1,175 graduates revealed:

- 58.3% transferred to other colleges and universities.
- 73.8% transferred as full-time students.
- 71.4% were employed after six months.
- 65 companies in Westchester employed our 2006 graduates.
- 16 additional companies in New York, but outside Westchester, employed college grads.
- \$43,853 was the mean salary for full-time jobs.

## ■ Programs of Study

Westchester Community College offers 36 programs leading to an associate degree and 21 certificate programs. Many of these programs prepare students to transfer with full credit to four-year colleges and universities. Others enable students to find jobs in their field immediately upon graduation.

### ***The Associate Degrees***

The *Associate in Arts Degree (A.A.)* and the *Associate in Science Degree (A.S.)* are awarded to candidates who successfully complete a liberal arts program which parallels the first half of a bachelor's degree in accredited four-year institutions. The programs are:

- Business Accounting
- Business Administration
- Communications and Media Arts
- Computer Science
- Engineering Science
- Food Service Administration: Foods and Nutrition
- Individual Studies
- International Business
- Liberal Arts & Science: Childhood Education (Teacher Education Transfer)
- Liberal Arts/Humanities
- Liberal Arts/Mathematics and Science
- Liberal Arts/Social Science

Graduates with an Associate in Arts or an Associate in Science degree are prepared for transfer to four-year colleges and universities.

The *Associate in Applied Science Degrees (A.A.S.)* are awarded to candidates who successfully complete a program combining specific career preparation with a foundation in the liberal arts and sciences and who plan for immediate employment or transfer.

The college offers A.A.S. career curricula in:

- Business Administration
- Business Marketing
- Chemical Dependency Counseling
- Civil Technology
- Computer Information Systems
- Criminal Justice: Corrections
- Criminal Justice: Police
- Early Childhood
- Electrical Technology
- Emergency Medical Technology — Paramedic
- Food Service Administration: Dietetic Technician
- Food Service Administration: Culinary Arts and Management
- Human Services
- Mechanical Technology
- Networking
- Nursing RN
- Office Technologies
- Paralegal
- Performing Arts
- Radiologic Technology
- Respiratory Care
- Fashion Merchandising
- Telecommunications Technology
- Visual Arts

## **Certificates**

Westchester Community College's 21 certificate programs prepare students for immediate employment in a variety of skilled occupations. The college currently offers one-year certificate programs in:

- Applied Art
- Chemical Dependency Counseling
- Computer Aided Drafting (CAD)
- Computer Applications Specialist
- Computer Programming
- Digital Arts
- Direct Care Practice
- Early Childhood
- Emergency Medical Service Mgmt
- Emergency Med. Tech—Paramedic
- Financial Office Specialist
- Help Desk Support
- Medical Billing and Coding
- Networking
- Office Technologies
- Paralegal
- Practical Nursing
- Small Business Entrepreneur
- Teaching Assistant
- Telecommunication Technology
- Web Development

## **■ Continuing Education**

The Division of Continuing Education works with all divisions and departments of the college to provide non-traditional programs for the community through varied delivery systems. Educational opportunities are available seven days a week, all around the county. Programs include the following:

**Professional Development Center:** Since 1984, the Professional Development Center (PDC) has assisted area businesses in achieving a competitive edge by providing cost-effective, customized training for their employees. Training through PDC is designed to help improve productivity, increase profitability and sharpen problem solving and people skills among the employees of Westchester-based companies.

**Extension Centers:** Westchester Community College has long been a leader in providing off-campus sites for the convenience of its students. In fall 2007, there were 11 off-campus locations throughout the county. Three new centers have been opened in recent years. An extension site in the village of Ossining opened in spring 2001, specializing in the life sciences and health care training. Another site dedicated to information technology opened in Yonkers in fall 2001. A third center opened in Mount Vernon in summer 2003 specializing in business, entrepreneurship, and culinary arts.

**Community Services:** Community Services offers a variety of personal enrichment and professional development classes to the community. Courses range from *Chess* to *Becoming a Notary Republic*; from *Introductory French* to *Real Estate Sales and Broker Career Training*; from *Hudson River History* to *CPR*. Responding to the changing needs of community residents, classes are designed to help prepare students for a new career, advance or maintain credentialing in a current career, or simply to expand and enjoy leisure time.

***Mainstream, The Institute for Older Adults:***

Mainstream brings innovative educational programming and career change options to mature adults. Responding to a broad range of older adult learning needs, Mainstream develops and presents challenging courses, workshops, conferences, and special events on the college's Valhalla campus and at community locations.

Course topics include: job readiness, enrichment, travel, and personal growth. These low-cost, non-credit courses are taught by Westchester Community College faculty and are tailored in content and length to meet different instructional needs.

***Project Transition:*** Project Transition, the Center for Displaced Homemakers, has been a leader for the past twenty years in training women, and a few men, who are divorced, separated, widowed, or whose spouse is unemployed or disabled to successfully re-enter the paid workforce. The program provides training in career decision counseling, work readiness, and job search and placement services, as well as computer skills training to help participants gain marketable skills and thus make a successful transition into suitable employment.

***The English Language Institute:*** In response to the growth in the number of English learners in Westchester, the college's English Language Institute (ELI) now serves over 4,300 students per year from 105 nations speaking 50 languages.

Funding is now in place from the state, the county, and the Westchester Community College Foundation to begin the construction of an on-campus building to be known as the Gateway Multinational Education Center. It will be dedicated to English as a Second Language (ESL) studies, and also provide additional classroom space urgently needed on the Valhalla campus.

The instruction of ESL students is geared to a variety of needs ranging from academic to professional; job-related to personal. Once prepared linguistically for college study, many students make the transition into a degree or certificate program at the college. Courses helping learners build English proficiency in all language skills at nine levels are offered on several schedules. There are also specialized courses offered each term in Basic Computer Skills, Pronunciation, Business English, Academic and Job-Related Writing, and TOEFL Exam Preparation; and in English for Academic Purposes course designed specifically for matriculating students preparing specifically for the linguistic demands of college degree programs. The ELI, upon request, also provides customized language courses and services for clients in business and industry.

***Westchester Art Workshop:*** Since its founding in 1926, Westchester Art Workshop has provided the Westchester Community the opportunity to explore and expand its creativity and gain an education in the visual arts. From the most traditional methods to the most cutting-edge technology, Westchester Art Workshop is dedicated to providing education in the arts and crafts, supporting the notion that the arts and creativity are fundamental to life. Westchester Art Workshop in White Plains is centrally located at the Westchester County Center.

Westchester Art Workshop's programs have evolved over the years into a full spectrum of offerings in the visual arts, computer arts, design, and fine crafts. The Art Workshop presently offers a wide variety of classes in fine arts, photography, computer arts and crafts. The warm and friendly environment makes the facility conducive to creativity and artistic endeavors. The computer labs, equipped with the latest Macintosh G5, offer digital imaging and popular instruction in digital arts for artists and career professionals. Westchester

Art Workshop offers fully equipped studios for Black and White Photography, Color Photography, Digital Photography and Digital Arts, Ceramics, Jewelry/Metalworking, Sculpture, Painting and Drawing. Courses in all these disciplines are taught by more than 50 faculty members who are active professional artists. Specialized technicians help facilitate the efficient operation of this wide range of technologies.

## ■ Educational Opportunity Center

The EOC, located in Yonkers, provides free developmental, academic and vocational education to underserved adults (16 years and older). Any low-income resident of New York State who meets the economic and educational guidelines set forth by the State University may be admitted. Students may study Certified Nurses' Aide, Customer Service, Direct Care Worker, Emergency Medical Technician, Home Health Aide/Personal Care Aide, Medical Billing and Coding, Microsoft Office Assistant or Microsoft Office Specialist. To meet the basic skills needs of many applicants, the EOC also schedules Basic Skills Courses for those who read below 7th grade level, High School Equivalency (GED), several levels of English as a Second Language, and a College Preparatory Academy for individuals interested in attending college. To supplement and/or reinforce instruction, EOC students have access to computerized courseware through its ATTAIN Lab. A comprehensive range of services are available to students to promote retention and success.

## ■ Distance Learning

Distance Learning at Westchester Community College offers students the convenience of choosing an instructional delivery system and time schedule best suited to their individual learning needs and lifestyles. The college offers several approaches to becoming involved in this exciting new way to learn.

In fall 2007, about 1,580 online students enrolled in one or more of the nearly 100 online sections available. A Computer Programming Certificate and an Associate Degree in Liberal Arts/Social Science and an Associate's Liberal Arts and Sciences/Humanities degrees are offered completely online. For more information about the Distance Learning program at the college visit the distance learning website at <http://www.sunywcc.edu/dl>

In addition, videocassette-based courses provide college credit through the use of videotapes, textbooks and study guides, in conjunction with a Westchester Community College faculty mentor.

## ■ Specialized Services

A wide range of services offered to students with special needs is also a hallmark of the college. Developmental students needing tutorial support are assisted by the Academic Support Center. Many of the senior tutors are also specially trained adjunct faculty teaching in the reading, math, ESL, and English departments.

***The Office of the Disabled*** assisted 1,171 students during the 2006-2007 academic year in providing supportive counseling, academic accommodations, advocacy, and referrals.

***“The Women’s Forum*** provides a variety of day-time, supportive services designed to ease and enhance the experience for adult women resuming their education at Westchester Community College. The program helps students create strategies for a successful college experience and assists with personal concerns, educational and career goal setting. The Office serves as a friendly “home base” on the campus where women students are always welcome.”

***First Generation Students Program:*** A TRIO grant from the U.S. Department of Education supports the college’s efforts to assist students with basic college requirements and serves to motivate students toward the successful completion of their education. The Student Support Services Program is geared towards remedial education students who are also first-generation college students, low-income and/or disabled. Identified at the outset of their college experience, a group of 160 students are offered a myriad of special academic support services and financial assistance to help them complete their degree and transfer to a four-year institution. A full-time coordinator, counselor and office assistant are working actively to oversee the program. The retention rate of students participating in the program has been remarkably higher than a control group of similar students.

# **WESTCHESTER COMMUNITY COLLEGE**

Dr. Joseph N. Hankin, *President*

## **BOARD OF TRUSTEES**

The Honorable Timothy S. Carey, *Chairman*

Jack Stadler, *Vice Chairman*

Toni Cox-Burns

Aleida M. Frederico

Jeremiah Jerome

The Honorable Angela Korniczky

Joseph McLaughlin

Dr. LeRoy W. Mitchell

The Honorable John G. Testa

Carsa Tennant, *Student Trustee*

Yolanda Howell, *Secretary*

## **COLLEGE FOUNDATION OFFICERS**

Betsy Stern, *Chairperson*

David Swope, *President*

William B. Snyder, *Vice President*

Debbie Raizes, *Vice President*

Elinor Urstadt, *Vice President*

Kevin Keane, *Treasurer*

Anita Helmrich, *Secretary*

Nina Jones Fink, *Assistant Secretary*

Shirley A. Phillips, *Executive Director*

Rebecca Samberg, *Vice President*

Prepared by  
The Office of Institutional Research & Planning  
Summer 2008

Nancy M. DeRiggi, *Associate Dean*

Michael D'Alessandro, *Research Analyst*

Naomi R. Dogani, *Research Assistant*

Marci Keon, *Office Assistant*

## COLLEGE ADMINISTRATORS

606-6708	Hankin, Joseph N.	President
606-6651	Bernstein, David	Assistant Dean, ELI
606-6845	Boyar, Fred	Vice President and Dean of Administrative Services/ Records Access Officer
606-6804	Champanier, Linda	Director, Program Development/ Institutional Advancement
606-6635	Conte, Jeffrey A.	Associate Dean, Business Behavior & Social Science, Public & Human Services
606-6977	Cooper, Rose	Assistant Dean, Evening Services
606-6589	DeRiggi, Nancy M.	Associate Dean, Institutional Research & Planning
606-6715	Fischer, Craig	Division Coordinator, Publications
606-6710	Reina, Juana	Vice President and Dean, Student Personnel Services
606-6714	Geraghty, Pamela	Acting Director, Information Technology
606-6610	Gilroy, Janice	Coordinator, Student Health Services
606-6585	Glusker, Marjorie	Vice-President and Dean, Community Services & Continuing Ed.
966-6810	Guy, Renee	Associate Dean and Director, Educational Opportunity Center
606-6770	Hackett, Eleanor	Director, Student Financial Assistance
347-3910	Queler, Mitchell	Director, Faculty Student Association
606-6716	Hennessey, Patrick	Director, College Relations
606-6912	Johnson, Calvin, Jr.	Associate Dean, Natural and Health Sciences
606-6880	Johnson Chandler, Sabrina	Director, Personnel
606-6713	Lesh, Seymour	Director, Grants
606-6789	Nygreen, Ted	Associate Dean, Mathematics, Computer, Engineering, Physical Sciences, & Technologies
606-6670	Phillips, Shirley A.	Vice President of External Affairs/Director WCC Foundation
606-6851	Pollard, Pamela	Assoc. Dean, Learning Resources, Library, Media, & Instructional Tech.
606-6712	Rogalski, Chet	Vice-President and Dean, Academic Affairs
606-6618	Rubenzahl, Ann	Asst. Dean, Continuing Ed.
606-6719	Salzberg, Rachelle	Assistant Dean, Academic Affairs
606-6521	Scordino, Anthony	Assistant Director, Information Technology
606-6731	Slavin, Kevin	Associate Dean, Student Affairs
606-6139	Spence, Talbert	Assist. Dean, Continuing Ed.
606-6810	Stanton, Susan	Registrar
606-6844	Torrieri, Louis	Director, Fiscal Operations
606-8536	Vanterpool, Karen	Department Chair, Library Dept.
606-6963	Wang, Jianping	Associate Dean, Arts, Humanities, Learning Resources
606-6777	Weigand, Don	Director, Counseling
606-6827	Winters, Margi	Assistant Dean of Distance Learning
606-6744	Wisell, Tere	Director, Admissions